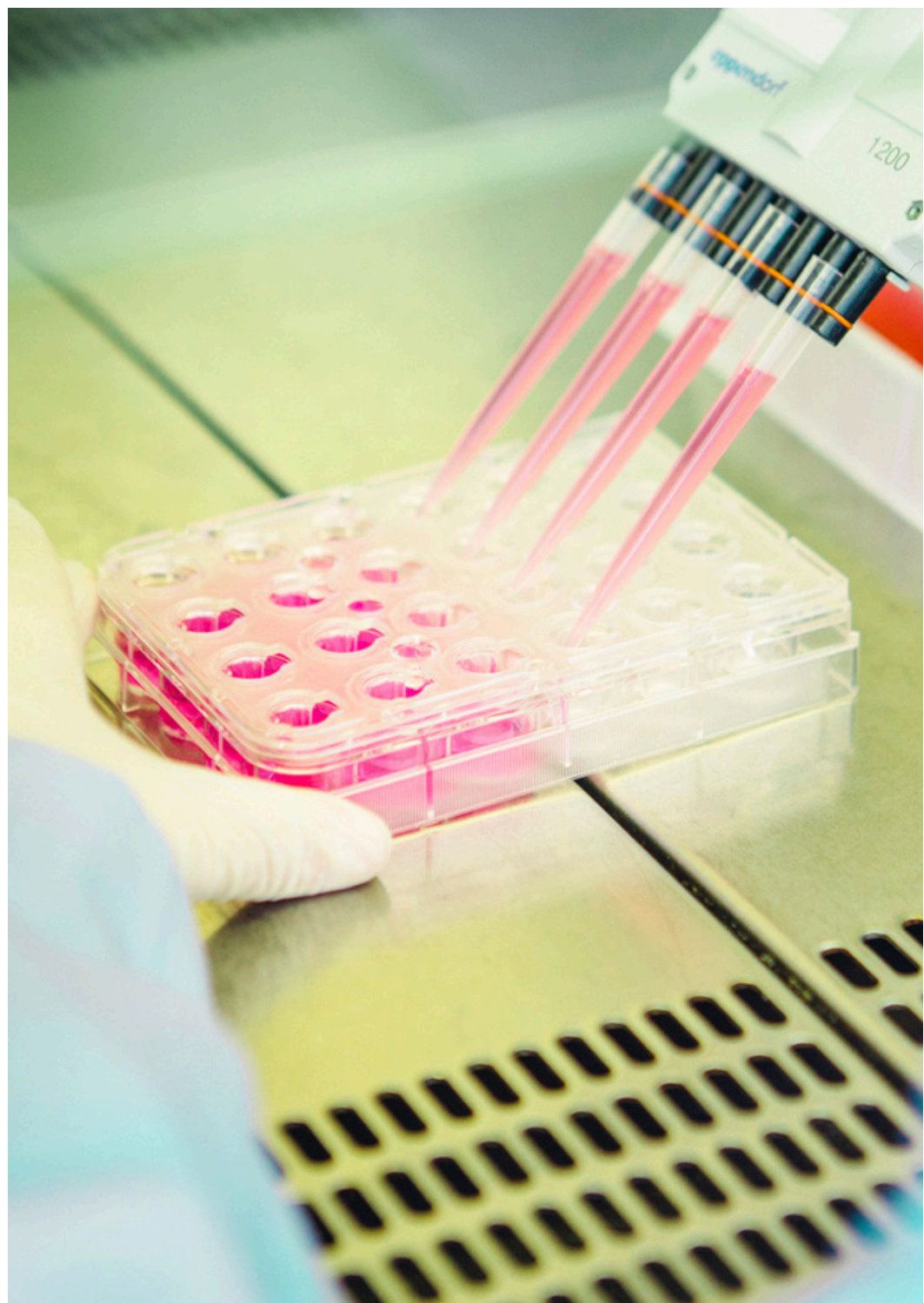




# FamilyPort

Evaluate your compounds with  
ready-to-use MDCKII cells  
expressing efflux transporters



# ReadyCell

## Easing your Screening

Streamline your preclinical research with our ready-to-use MDCKII cell-based plates, designed to facilitate the assessment of drug-transporter interactions. Ideal for ***in vitro*** studies of new compounds, these plates come differentiated.



Ready-to-use  
technology



No cell  
licensing



Suitable for high-  
throughput  
automated  
processes



Shipments at  
room  
temperature



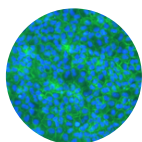
Versatile and  
reproducible  
between  
batches



Results  
accepted by the  
regulatory  
agencies

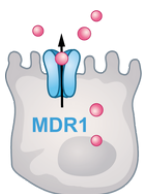
# The efflux family members

Discover our plates cultured with 12-day differentiated MDCKII cells. Thanks to an exclusive technology and 20+ years of experience, we have developed a protocol that guarantees reliable results while preserving cell integrity from transport to experimentation.



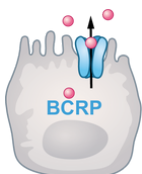
## PreadyPort<sup>WT</sup>

In vitro reference model to evaluate passive permeation of orally administered drugs.



## PreadyPort<sup>MDR1</sup>

MDR1 or P-gp transporter plays a critical role in drug intestinal absorption, biliary and urinary excretion, and in the entry of molecules into the central nervous system.

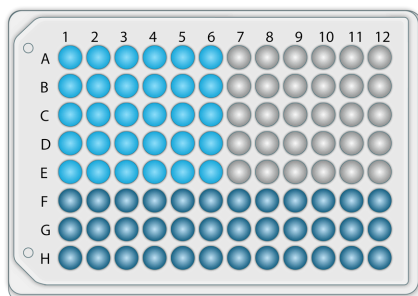
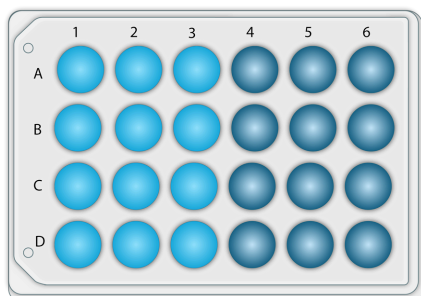


## PreadyPort<sup>BCRP</sup>

BCRP is a high-capacity efflux transporter with broad substrate specificity. It is located in the apical cell membrane of barrier tissues and excretory organs.

# Custom your plate matching transporters

Customize your 24-well and 96-well plates by combining MDCKII cells overexpressing efflux transporters according to the assay requirements.



## Discover other applications

- Drug permeability through the Blood Brain Barrier
- Efflux through P-gp and BCRP
- Transporter substrates, inhibitors and inducers
- Transporter-based drug-drug interactions

### To find out more:

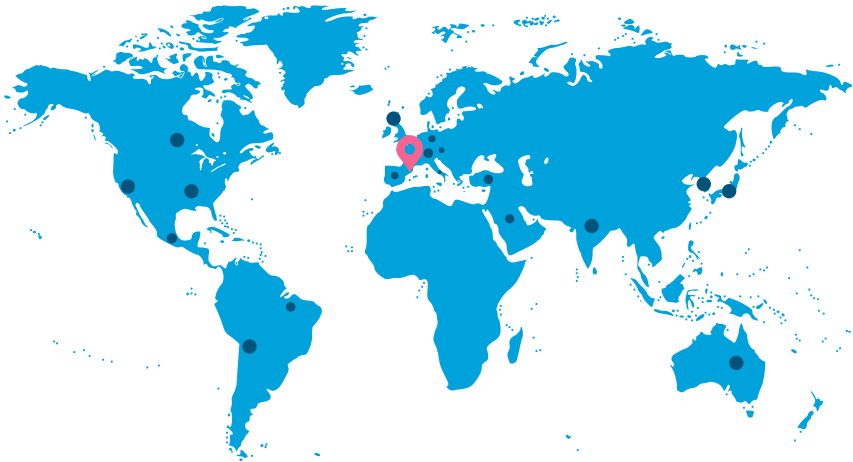
Visit [readycell.com/products/](https://www.readycell.com/products/)  
or scan the QR code.



# Supplying worldwide shipments

We customize our production schedule to accommodate your chosen assay week. Following order placement, plates are dispatched one weeks later. You will receive a confirmation email upon shipment containing all technical and tracking details.

**Our patented technology, the Shipping Medium, ensures cell viability during transportation at room temperature up to seven days.**



**1 week in  
advance**

Plates  
production

**Monday/  
Tuesday**

Packaging &  
shipment

**24 - 96h**

Delivery  
24-48h EU  
48-96h world

**Friday**

Shipping  
medium  
liquefaction

**Following  
week**

Assay

# Test with ease from the first minute

1-Receive



2-Liquefy



3-Incubate



4-Assay



Get rid of the time-consuming duties of thawing, seeding and maintaining frozen cells. **With ReadyCell differentiated fresh cells, you save time and effort, as all processes are managed for you.**

Upon delivery, just liquefy the shipping medium, transfer the cells to the incubator, and they will be ready for the assay.

## Need extra help?

We are at your service. Whether you need technical advice or help with purchases, our commercial and technical teams are prepared to offer the assistance you require. Additionally, the orders include:

- **User's manual**
- **Best practices video-training**
- **Calculations template**
- **Quality controls**



## CONTACT US

+34 93 403 70 77  
reagents@medtechbcn.com  
medtechbcn.com

Barcelona Science Park  
Carrer de Baldiri Reixac, 10  
08028 Barcelona, Spain

